

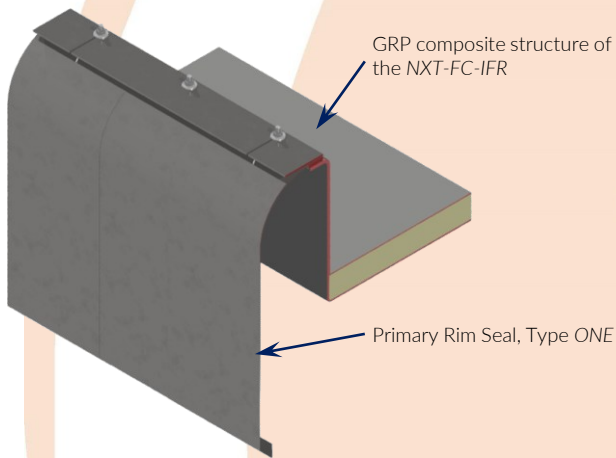


NXT-FC-IFR is a GRP / GRE full-contact internal floating roof designed for covered aboveground storage tanks. The roof floats in direct contact with the stored liquid and is engineered to eliminate vapor space below the roof, improve emission performance and support reliable tank operation.

Each NXT-FC-IFR is designed according to the actual tank geometry, stored product, operating conditions and project requirements. The composite construction is selected for the chemical environment of the application.

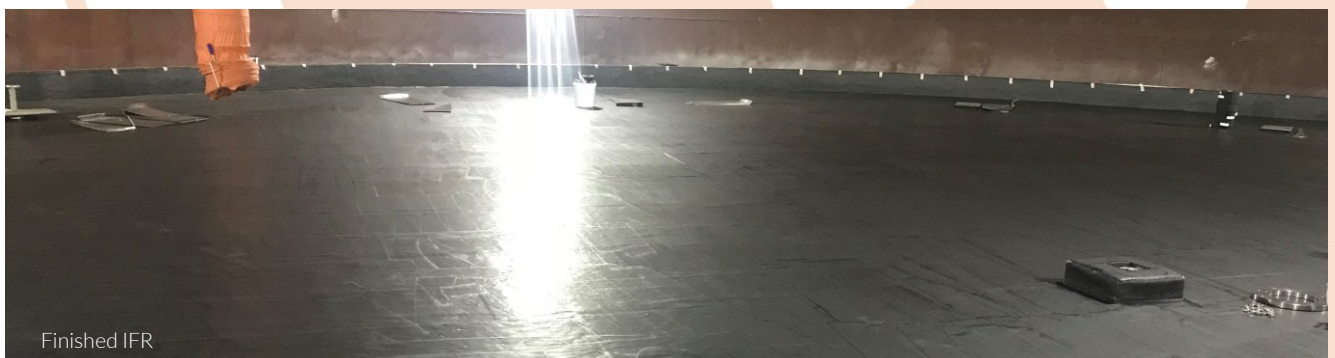
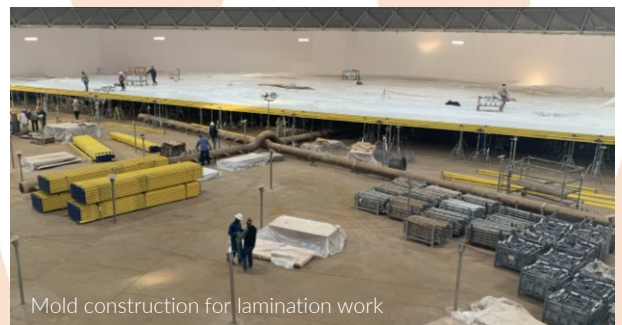
Installation is performed inside the tank by WLI's qualified field service team using a site-built GRP / GRE construction method.

### NXT-FC-IFR Section with ONE Primary Rim Seal



### Key Performance Features

- ✓ GRP / GRE full-contact internal floating roof design
- ✓ Application-specific engineering based on tank geometry, stored product and operating conditions
- ✓ Full-contact design to eliminate vapor space below the roof
- ✓ Application-specific GRP / GRE composite construction based on stored product and chemical environment
- ✓ No corrosion-related coating maintenance compared with carbon steel roof structures
- ✓ Designed for low-maintenance operation of the composite roof structure under specified service conditions
- ✓ Anti-static and electrically conductive GRP / GRE composite construction
- ✓ Low-profile construction to support available tank working capacity
- ✓ Compatible with WLI ONE rim seal technology
- ✓ Site-built installation inside the tank by qualified WLI field service personnel
- ✓ Project-specific documentation and as-built documentation available





## Installation

Turnkey installation service performed by WLI's experienced and qualified field service team.

Fire protection requirements are evaluated according to the applicable project requirements and relevant industry standards, including NFPA 11 where applicable.

## Roof Support Options



H-Beam Support  
4" (100mm)



Pipe Support  
3" (88.9mm)



Height adjustable leg

## The lamination Process



## Honeycomb Core Material



## NXT-FC-IFR Installation completed



Vacuum Breaker / Bleeder Valve



Rim Vent



Man-Way Cover



NXT-FC-IFR resting on the roof supports

*Advanced Floating Roof Operation and Effective Emission Control*